

Pipe Leadthroughs Manhole Fittings



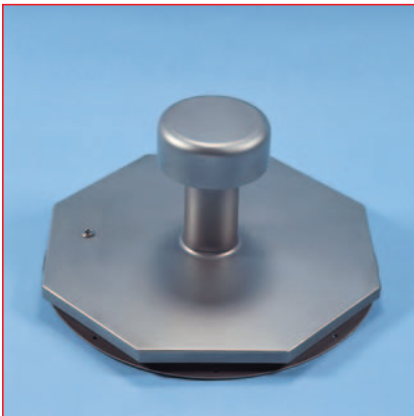
RDFN
With adhesive flange or
adhesive and clamping flange
of 3 mm metal

Ceiling/Wall ducts in all variations

Whether fitted only with a clamping or adhesive flange, or with an adhesive flange and a supported flange to DIN18195 T9, you can rely on WALDNER pipe leadthroughs, with their qualitative highly grade processing and stability.



RDFD
To DIN 18195 T9, with 6 mm
thick adhesive and clamping
flange



SA-RD-RES
Square or round rainproof
manhole cover

All Purpose Manhole Covers

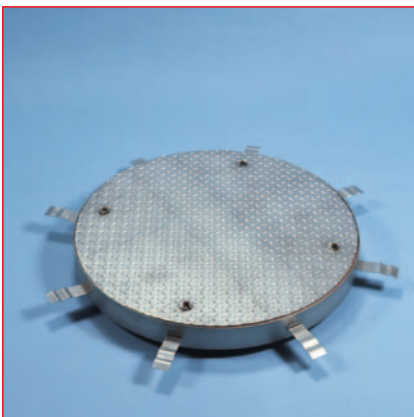
The manhole covers are manufactured according to DIN EN 124 and DIN1229, and are available in either a round or a square finish.

The BTF and BFB model manhole covers are particularly remarkable for their overlying seal. The unavoidable gap is minimised, thus ensuring the utmost hygiene.

Moreover, back water safe drain covers can also be supplied.



SA-E-BTF
Square or round manhole covers
for any surfaces



SA-RD-BFB
Square or round passable
manhole cover

What has made stainless steel manhole covers stand out, has been their corrosion and erosion resistant linings. Furthermore, the penetration of bacteria is impossible, as stainless steel has a hygienic surface.



SG-RD
Round manhole bottom, also
suitable for use in existing
manholes