

# Hygiene Appliances



DDSB  
Disinfection walk through  
basins, also available as drive  
through basins



HWB-WH-RD  
Washbasin with touch-less fitting  
low-priced from the stock



HWB-WH-RD-AW  
Washbasin with back wall and inte-  
grated touchless fitting, battery or  
power operated

## Hygienic solutions by the expert

The subject of hygiene is  
on everyone's tongue and  
its significance is growing  
continually.

WALDNER can offer you  
their support with well  
developed and economically  
practical solutions. Personnel  
and production areas are  
often separated by so called  
hygiene sluices. Foot basins,  
which WALDNER individually  
adapt to suit the respective  
conditions, form an important  
part of this.

Hand washing, without physical  
contact, cannot be done without  
these days. WALDNER offers an  
extensive programme, from low  
budget hand wash basins, to  
multiuser hand wash channels,  
right up to preinstalled and fully  
wired hygiene wash stations.

The no contact fittings are  
available as battery powered  
devices, or for connection to  
230V.

To complete the hand wash  
programme, steel mesh waste  
paper bins, hand towel, soap  
and disinfectant dispensers with  
an hygienic steel cover are also  
available.



HWS  
Hygiene washstation,  
preinstalled and fully wired



HWR  
Hand wash channel for two,  
three or four bays



Towel, soap and antiseptic  
dispenser out of stainless steel

# Hygiene Appliances



SH  
Apron suspensions for 18, 24 or 28 aprons



STH  
Boot rack for 20, 24 or 28 pairs of boots



Sinks in several sizes

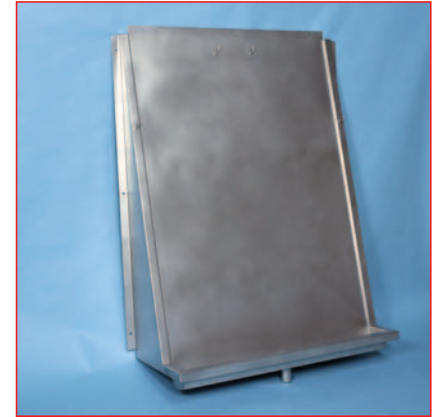
As well as hand hygiene, there must also be provisions for the cleaning of the clothing and equipment.

For this, WALDNER offers tried and tested products, which are available in a wall fitted or standing design. In addition, combinations are also possible. A combined apron and boot cleaning facility not only saves space, but is also cheaper than the corresponding individual parts.

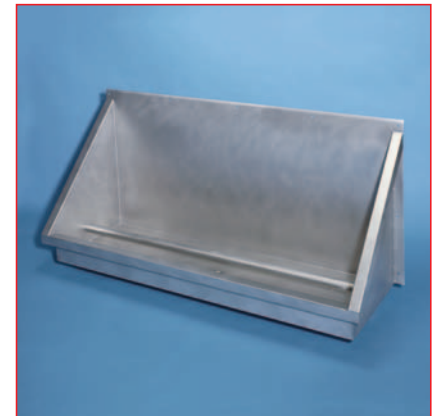
The cleaned aprons and boots can be dried afterwards on the corresponding holders. In this way, the aprons hang compactly in a row, whilst the boots hang in pairs beside and above each other.

The hygiene programme is made complete with stainless steel hose holders.

Especially in the field of washing the sinks and universal basins in different sizes are especially suitable. Very practical and space saving is the combination wash hand basin sink.



SWP  
Apron wash rack, which can be combined with boot wash



STWR  
Boot wash for one or two bays



Universal basins in several sizes



Combination wash hand basin sink



Stainless steel pipes as plug in socket system

The WALDNER drainage system is ideally completed with a waste water program as plug in socket system. Stainless steel pipes and stainless steel adapters are available in the sizes DN 40 to DN 250 in the materials 1.4301 (V2A) and 1.4571 (V4A)



Several pipe designs possible

## Fittings to Measure

Through decades of experience in the manufacture of individual specialist fittings, a standard programme has emerged at WALDNER, which would make ideal construction kits for a multitude of purposes.

Not only large kitchens and gastronomical firms can be fitted with the WALDNER standard programme, but it is also extremely suitable for use in fields of production.

Moreover, the standards can frequently serve as a starting point for customised and individual solutions. For example, individual elements with a hygienic design can be manufactured for sensitive areas. In this way, tables are made with an all round closed in table top (which can also be pressure foamed for an increase in load) and cupboards have an inner body with rounded corners.

A lot of things are possible – just ask us.



SPTG Sink without ground level, also available as table or work/sink cabinet



ZT Hygienic cutting table removable cutting boards and removable stainless steel panel



RGB Shelf installations are available as standing or wall fixed units



Single standard elements can be put together to form an effective whole