

Floor Drains



DRS-100-RDS-oKFB
Floor drain for all floors
without foil seals

Floor Drains to DIN 19599/DIN EN 1253

No other German enterprise can look back on more experience in the manufacture and use of stainless steel floor drains than WALDNER.

The quality of fabrication and the constant exchanging of experience with the consumers facilitate the choice of the most economical solution for all purposes.

Nowadays, WALDNER floor drains are manufactured using the deep drawing process. This keeps the number of welded joints to a minimum and creates a hygienically faultless surface.

A self cleaning effect is produced by the large radius at the casing floor and the rotation dynamism of the water, and there are no more dirt corners.

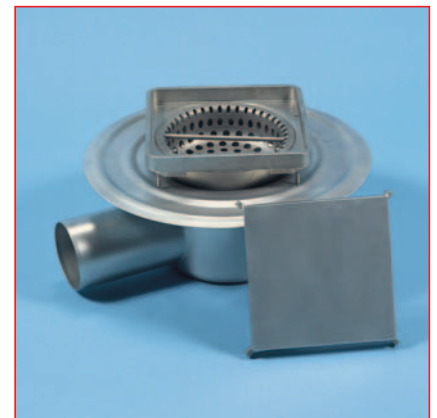
Even the angular inlet rims are in the meantime suitable for use in raised floors, as they no longer cause a notch effect because of the rounded corners.



DRS-100-E-S
Floor drain for floors with foil
seals



2000-100-RD-S
Low priced alternative for high
duty



H-100-E-W
Height adjustable and twistable
with horizontal outlet



96-100-RD-S
Combined silt boxes and air traps
with volumes of 4.0 litres



Conical funnel cover



85-100-E-S
"Bakery" floor drain with
removable inner housing

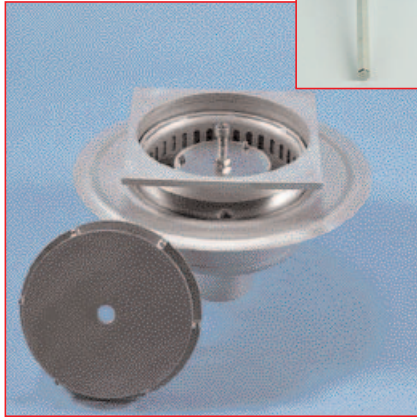
Floor Drains



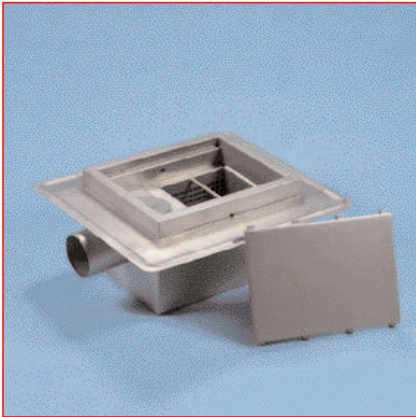
71-100-E-S
Floor drain with combined silt box and air trap

All floor drains are made exclusively of stainless steel AISI 304 or 316 Ti, or on the customer's request, of higher grade alloys. All floor drains are pickled and glass bead blasted, so that the properties of the steel come into full fruition.

Even the installations like the silt box and air trap are made of stainless steel.



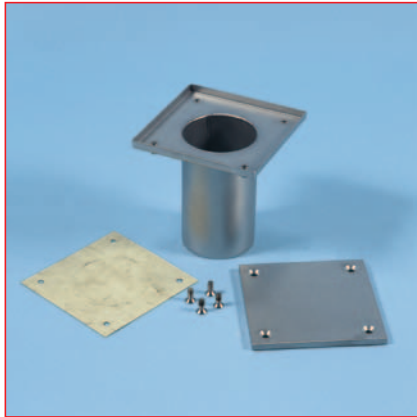
82-100-E-S
Lockable with a gasket on the drain pipe and socket wrench



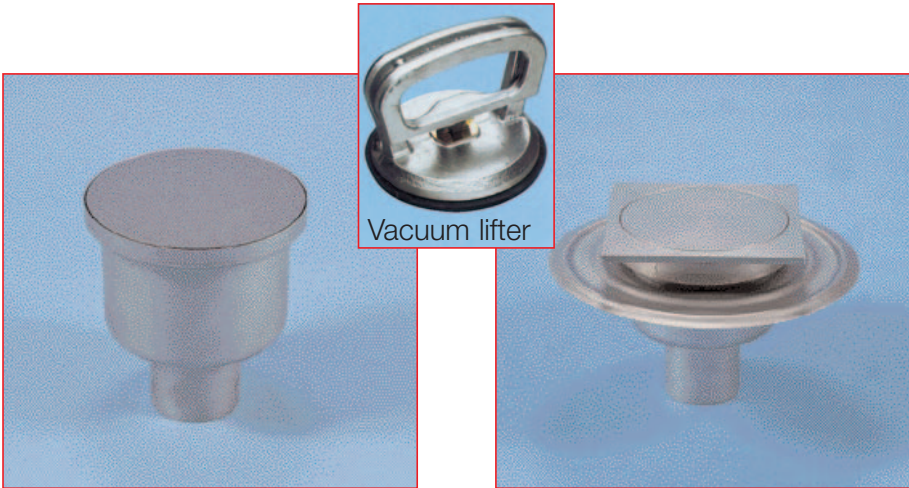
73-100-E-W
Large drain with silt box of up to 30 l volume

All standard floor drains have a plate cover, which are designed for heavy loads, as this is easiest to clean. Gratings, bar gratings and metal covers can, of course, also be provided.

Nominal widths of 050 to 250 DN are available, and can be finished with a vertical (S), subhorizontal (UW) or horizontal (W) outlet.



REV-100-E-S
Checking opening, water and odour proofed



91-100-RD-S
Closeable by a cover with seal

88-100-E-S
Clean room floor drain with very small gap



SSK-050-E-S
Sanitary floor drains for shower- and bathrooms, available in DN 50, 70, 100