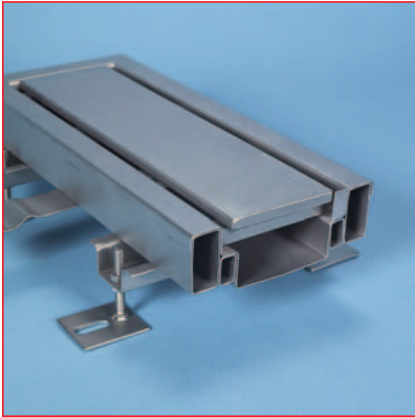


# Channels



**IKR**  
Box selection channel with double rectangular profile reinforcement



**KBR**  
Combination of box selection and slotted channel makes easier cleaning possible



**UNIDRAIN**  
Low-priced alternative for low duty like balcony or terrace

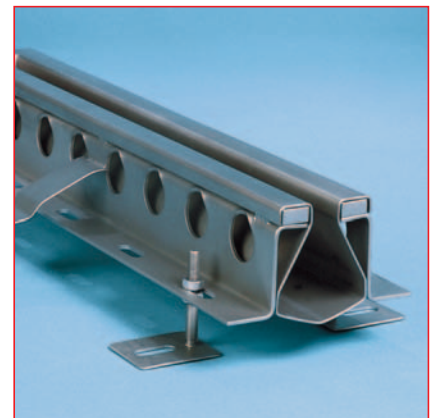
## Channels in every width

One of the remarkable features of WALDNER drainage channels is that the allround edge protection is reinforced with a welded profile inside. These profiles enable a better interface and force distribution. Furthermore, larger adhesive surfaces are created for the respective raised floors, which enables a coupling of the various materials.

When choosing the covering, the load plays a decisive role. At WALDNER, we don't follow the DIN (test stamp  $\varnothing$  250 mm), but rather follow practice (test stamp 3x6 mm), because in practice no grating will withstand a load of 12.5 T wheel load, e.g. that of a fork lift truck.



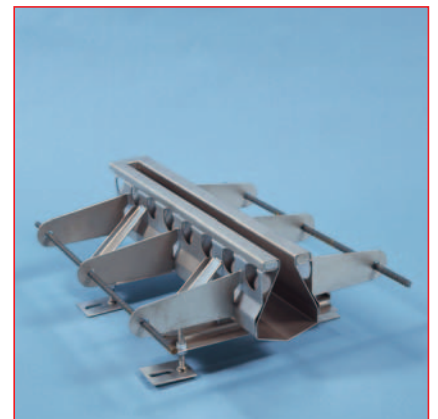
**SRD-70 and SRD-90**  
Standard slotted channel with distance holders



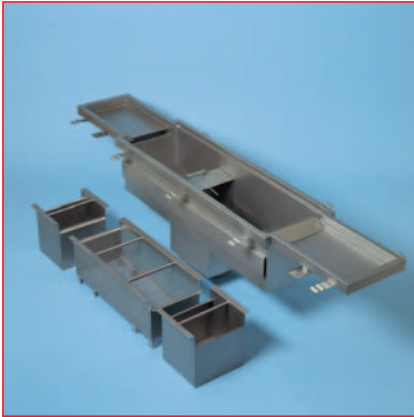
**SRO**  
Hygienic heavy duty channel, without distance holders



Special channel for special requirements. Ask for advice.



**SRZ**  
Slotted channel with tie rod, without distance holders



**GKSE**  
Large cork glass label drain,  
volumes of up to 100 litres

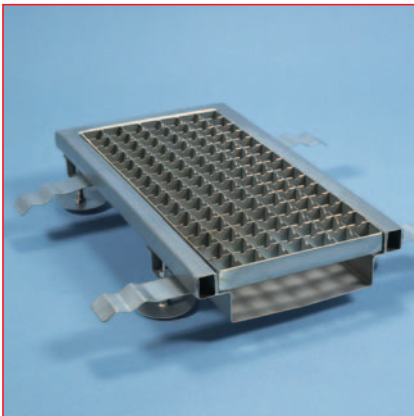
The special channel drains come in three versions: welded, plugged in and hygiene, have large volume silt boxes of up to 20 litres. Besides this nearly all individual inlets can be welded on to the drainage channels.

## Kitchen Drainage

WALDNER kitchen box section channel is the lighter version of the industrial box section channel. Because the kitchen drain is usually exposed to lighter loads, a stainless steel U-profile is enough reinforcement.



**RKSE**  
Welded channel inlet with two  
large silt boxes



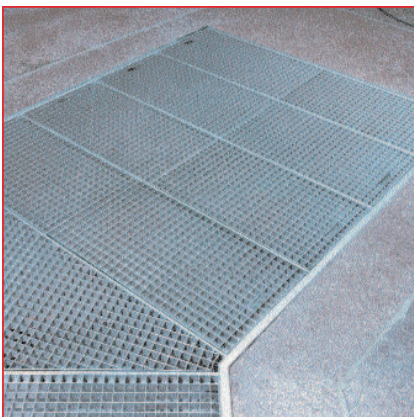
**KUR**  
Kitchen box section channel with  
U-profile reinforcement

The kitchen drain is joined to the floor drain by a plugged in connection piece. If there is no foil sealing, the floor drains can also be welded into the channel.

The kitchen floor drains of model range 86 have a clamping flange and supported flange joint as standard. These flanges - like all the flanges on the individual outlets - have a rounded finish. This rounded flange prevents damage to the sealing from corners and edges. Furthermore, creases are put into the flange to create better adhesion.



**KUSR**  
Products permanently in store in  
three sizes, complete with drain



Drainage pan in several designs



**86-11-100-S**  
With adhesive and clamping  
flange in round finish



**86-12-100-W**  
With adhesive and clamping  
flange, flat silt box and low over-  
all height